

Dog Days Ale 2019 – Blue Tour (Saturday)

Schedule

9:25 am – Leave camp

10:00 am – 11:00 am – Show Dancing at Lafayette Park, Watkins Glen, NY*

11:15 – 12:15 pm – LUNCH: Watkins Glen Community Center, Watkins Glen, NY

1:00 pm – 1:45 pm – Dancing at Castel Grisch, Reading, NY

2:25 pm – 3:10 pm – Dancing at Finger Lakes Distilling, Burdett, NY

3:40-4:40 pm – Show Dancing at Watkins Glen State Park

Afterwards, snacks will be available at Peter's starting around 6:00 PM. You may hike in Watkins Glen before heading to Peter's; be sure to return in good time for 7:00 pm – DINNER!

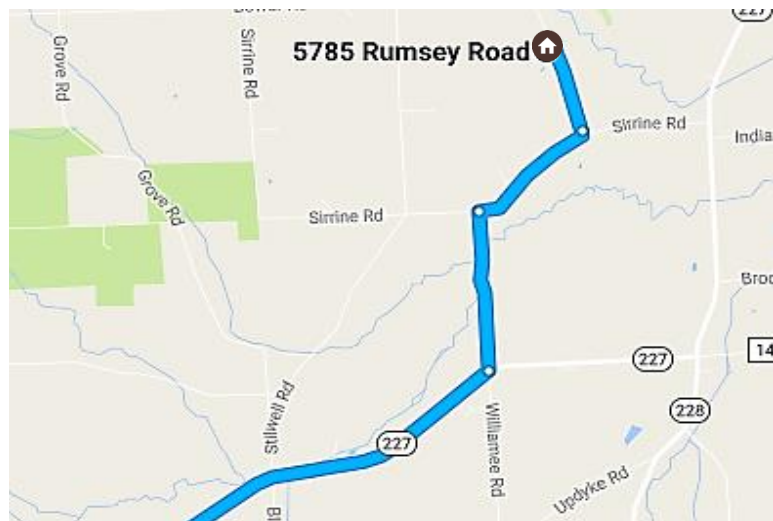
* Note: Lafayette Park does not have public restrooms, only porta-johns.

LOST? Call Dan (315-663-6514) or Maria (315)395-6264

First Stand: Show Dancing at Lafayette Park (East 4th St between Porter and Decatur), Watkins Glen, NY 14891

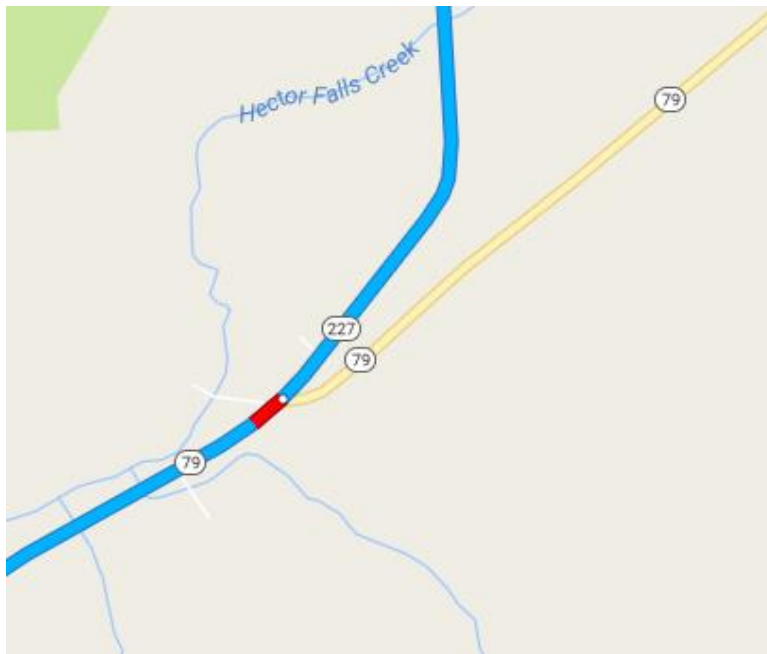
GPS Waypoint Lafayette Park: 42°22.86' N 76°52.18' W

- Turn RIGHT (south) out of Peter's driveway onto Rumsey Rd.
- Take Rumsey Rd. to Surrine Rd (0.4 miles).
- Turn RIGHT (west) onto Surrine Rd.
- Take Surrine Rd. to the next left (0.5 miles).
- Turn LEFT (south) onto Williamee Rd.
- Take Williamee Rd. to the stop sign (0.7 miles).
- Turn RIGHT (west) at the stop sign onto Rte. 227 S.

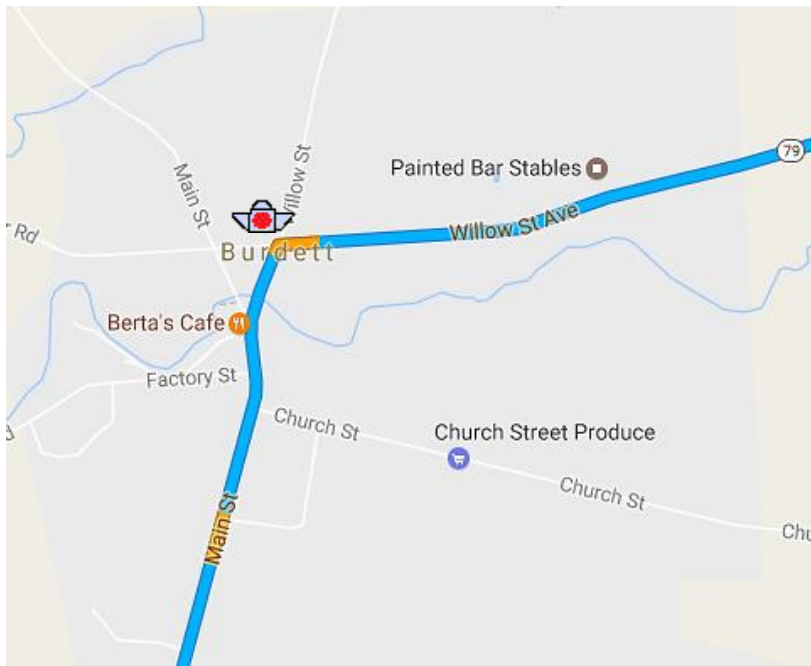


Dog Days Ale 2019 – Blue Tour (Saturday)

- Take Rte 227 S for 5.0 miles.
At that 5.0 miles point, Rte 227 joins with and continues as Rte. 79 W.



- Follow Rte. 79 W for 4.1 miles to the village of Burdett.



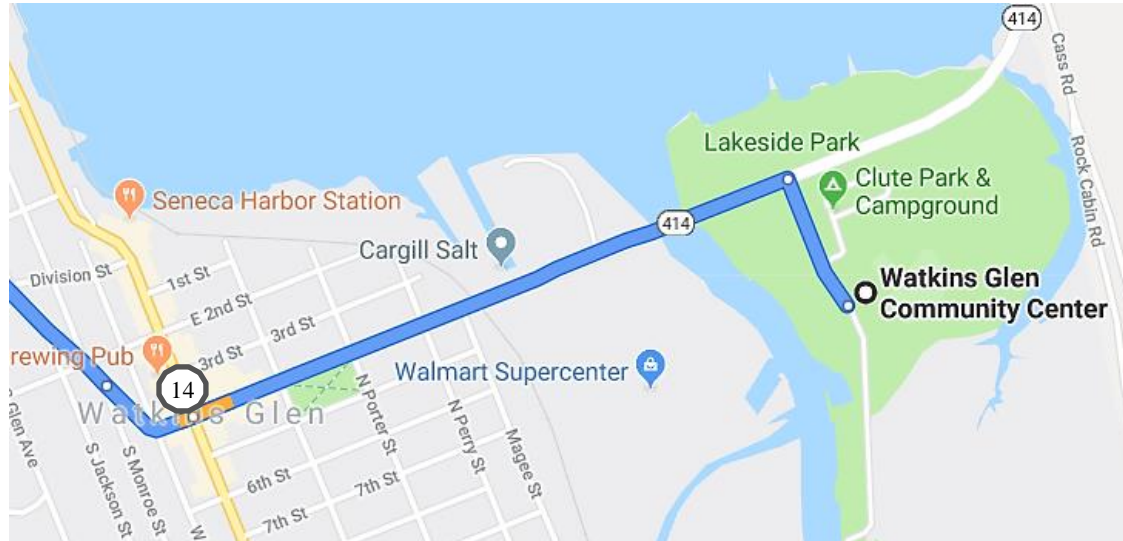
- Turn LEFT (south) at the flashing red light to continue on 79 W.
- Follow Rte. 79 W for 1.8 more miles. At this point Rte. 79 continues as Rte. 414 S.
- Take Rte. 414 S into Watkins Glen for 1.4 miles. (This becomes Fourth St.)

Dog Days Ale 2019 – Blue Tour (Saturday)

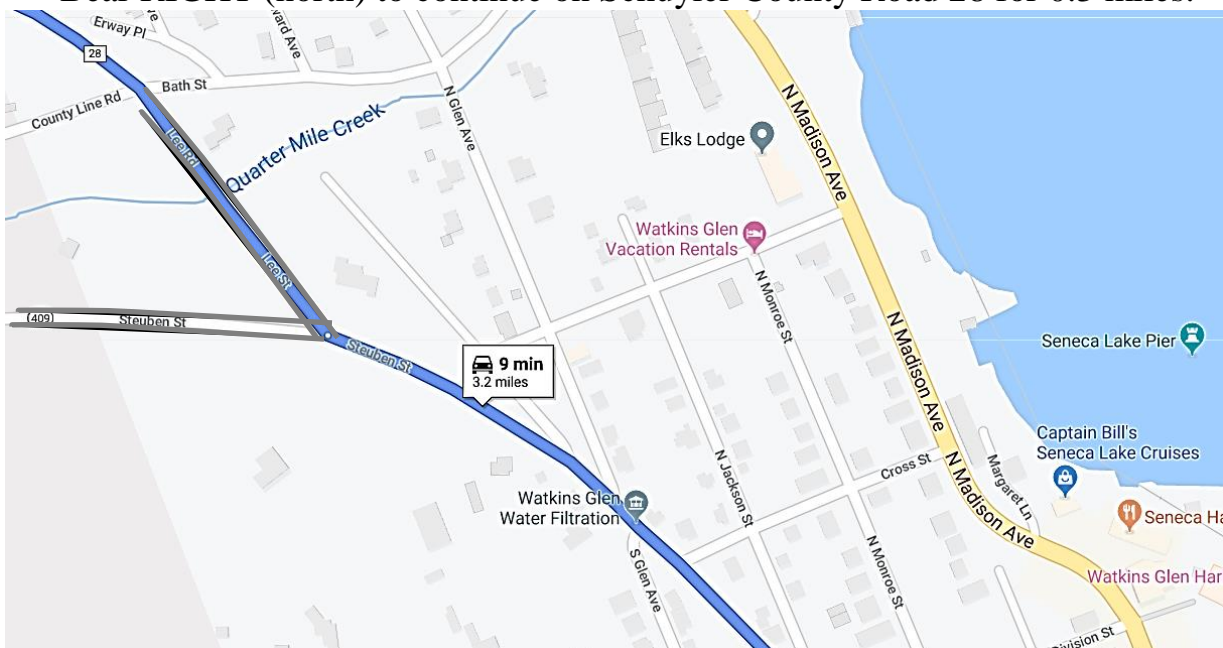
Second Stand: Castel Grisch, 3380 County Rd 28, Watkins Glen, NY

GPS Waypoint Castel Grisch: 42°23'48.8"N 76°54'04.2"W

- Leaving the Community Center, head north on Boat Launch Road toward Fourth St (Rte. 414 N) for 0.1 miles.
- Turn LEFT (west) onto Fourth St. (Rte. 414 N)
- Continue STRAIGHT along Fourth St. for 0.7 miles to the traffic light;
- Continue STRAIGHT across Hwy 14 onto 409 West/Steuben St. for 0.5 miles.

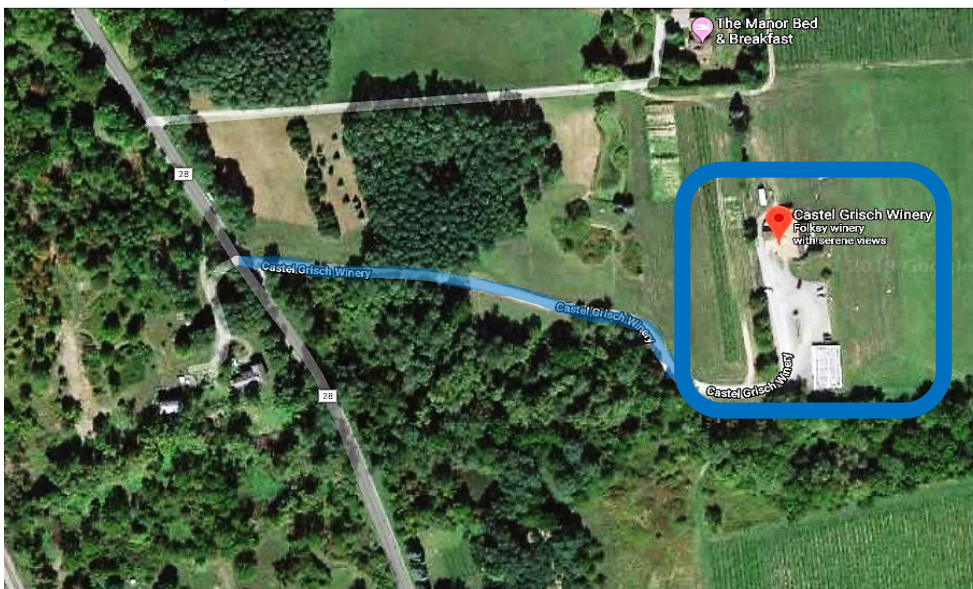


- At the fork where a small blue sign directs you to Castel Grisch, turn RIGHT (north) to follow Schuyler County Road 28 (Lee St.)
- Continue on Schuyler County Road 28 for 1.1 miles to another fork in the road.
- Bear RIGHT (north) to continue on Schuyler County Road 28 for 0.3 miles.



Dog Days Ale 2019 – Blue Tour (Saturday)

- Slow down and watch for the Castel Grisch sign on the RIGHT.
- Turn RIGHT (east) into the gravel driveway and drive 0.3 miles up to the Castel Grisch Winery.

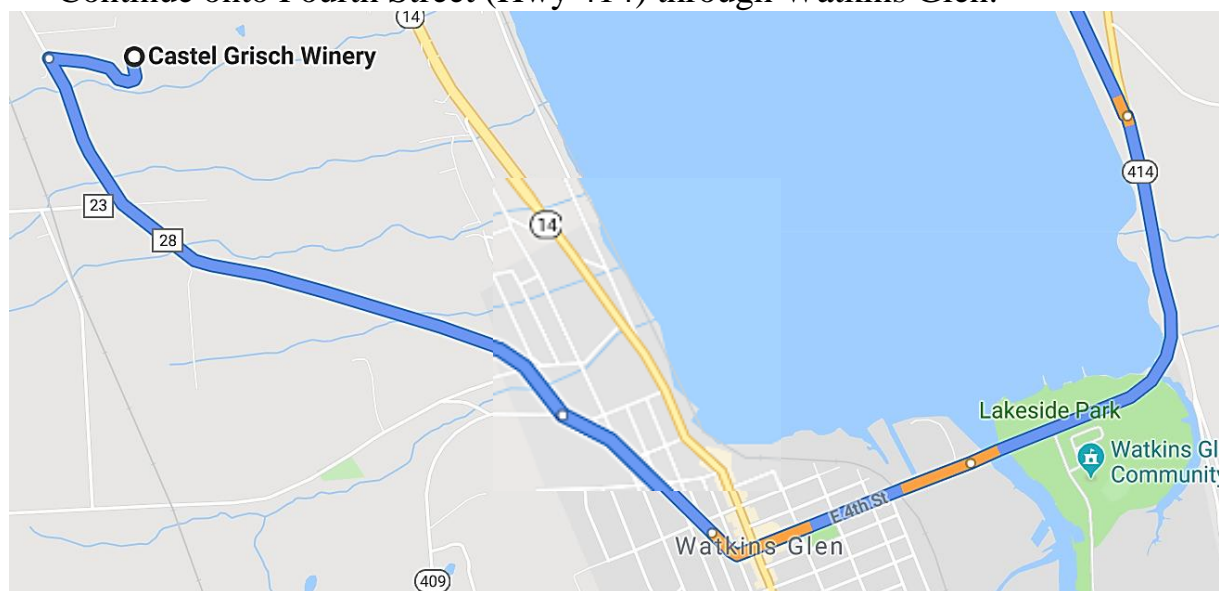


We'll be dancing on the covered deck at the rear of the main building.
[Or the wooden floor inside, if the owners prefer...]

Third Stand: Finger Lakes Distilling, 4676 Route 414, Burdett, NY 14818

GPS Waypoint Finger Lakes Distilling: N 42°27.6' W 76°51.8'

- Drive down the driveway, turn LEFT (south) onto Schuyler County Road 28.
- After 0.3 miles, at the stop sign turn slight LEFT (south).
- Drive on Schuyler County Road 28 for 1.2 miles to a stop sign at Steuben St.
- Turn LEFT (south) onto Steuben St which curves left as it enters Watkins Glen.
- Continue onto Fourth Street (Hwy 414) through Watkins Glen.



Dog Days Ale 2019 – Blue Tour (Saturday)

- Note your mileage as you pass LaFayette Park (where the First Stand was).

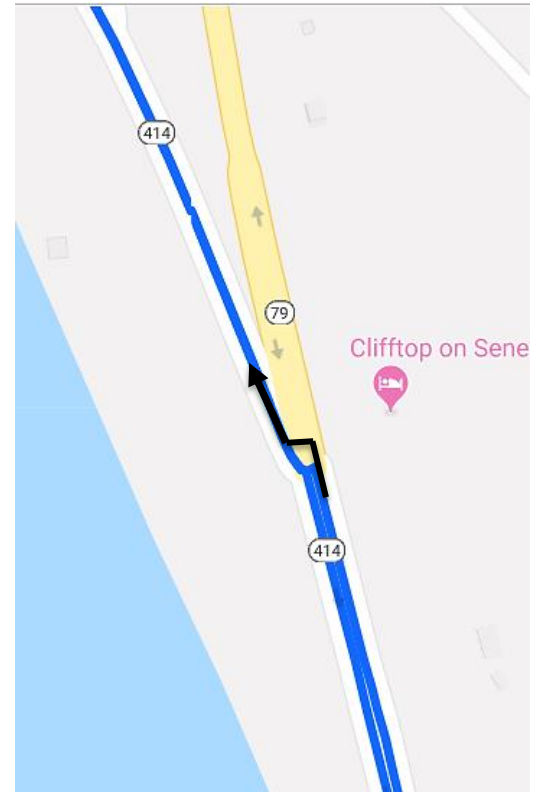
From LaFayette Park,

- Continue along NY Hwy 414 for 1.5 miles.
- Turn LEFT (north) to STAY ON NY Hwy 414. →
- After 4.4 miles, turn RIGHT (east) into the driveway for the distillery. Watch for this sign:



Park at the end of the parking lot away from the building. Please leave room for other customers near the building.

We will be dancing on the deck at the far side of the building.

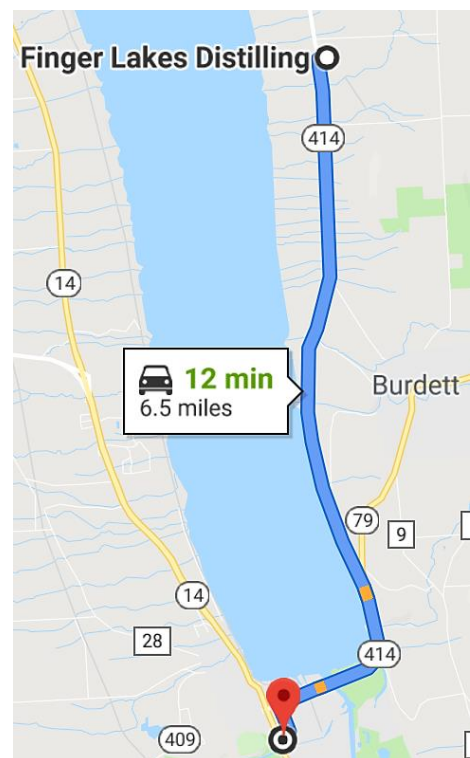


Fourth Stand: Show Dancing at Watkins Glen State Park Park in the Schuyler County Family parking lot, 105 9th St, Watkins Glen, NY 14891 Park, then Walk to Watkins Glen State Park, Main Entrance, near Gift Shop

GPS Waypoint Courthouse Parking Lot:
42°22'38.2"N 76°52'14.5"W

From the Finger Lakes Distillery parking lot:

- Turn LEFT (south) onto Hwy 414
- Head South on NY Hwy 414 for 6.1 miles, entering Watkins Glen.



Dog Days Ale 2019 – Blue Tour (Saturday)

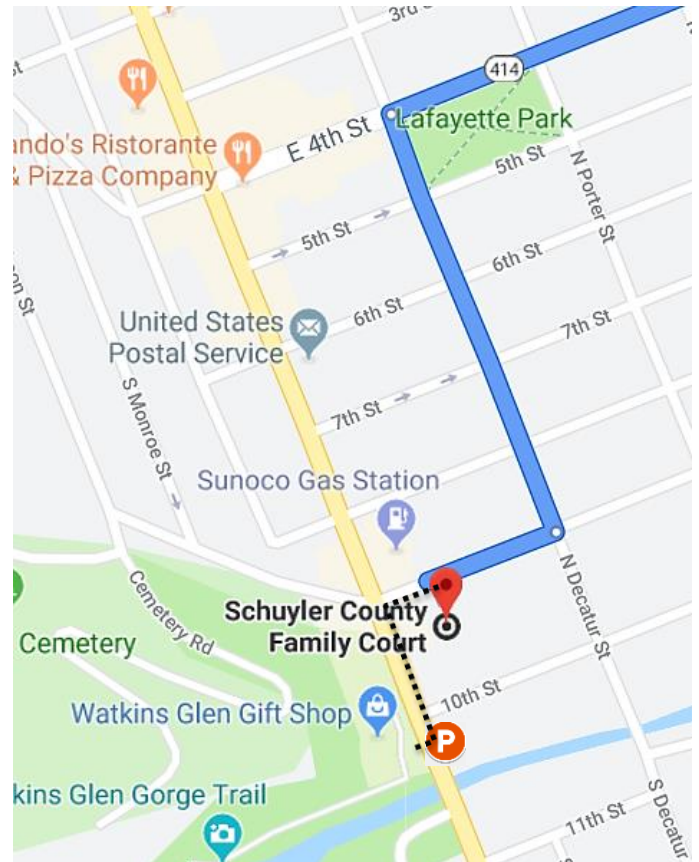
- Just after LaFayette Park, turn LEFT (south) onto Decatur Street.
- After 0.2 miles, at a stop sign, turn RIGHT (west) onto 9th St.
- Halfway down the block, turn LEFT into the Courthouse Parking Lot.
If the lot is full, you can park on 9th Street.

Walking Directions from your car:

- Go West toward the traffic light at Franklin Street (Hwy 14).
- Turn LEFT (south) onto Franklin St, and walk all the way to the Crosswalk near the State Park Entrance.

We will gather in front of the Watkins Glen Gift Shop.

Please cross Franklin/Hwy 14 at a Crosswalk!



After dancing at the State Park:

Return to Peter's farm, where snacks will be available starting around 6:00 PM. Dinner is not until 7 pm. Swimming & Ice Cream alternatives are listed below.

Plan Accordingly:

If you are helping with Dinner or Decorations, head straight back to Peter's Farm. If not, you can hike up the Glen a little way, then return to your car and drive to Peter's.

- Courthouse Parking to Peter's Farm: 25 minutes

If you have a GPS, and you can be sure to get back to Peter's in time to wash up for dinner, you can swim or make an ice cream stop:

Swimming options:

The pond at Peter's Farm (free and convenient)

Clute Park in Watkins Glen: Lakeside Park, \$5 for parking

Watkins Glen State Park: Olympic-size pool at the South Entrance to the State Park:
\$8 for parking

Cayuga Lake Creamery:

8421 NY-89, Interlaken, NY 14847

- Last stand to the Creamery: 35 minutes
- Creamery to Peter's Farm: 15 minutes

Dog Days Ale 2019 – Blue Tour (Saturday)



- Continue straight on Rte 227 N.
- Follow Route 227 for 3.7 miles.

- Turn LEFT (north) onto Stilwell Rd.
- Drive on Stilwell Rd. for 2.4 miles.
- Turn RIGHT (east) onto Bower Rd.
- After 0.6 miles, turn RIGHT (south) onto Rumsey Rd.
- Peter's house is 0.2 miles up on the right side of the road.

